

35th ANNUAL

REPORT 2021-22



"To be a catalyst for creation of a society rooted in the principles of dignity, justice and solidarity"



CENTRAL HIMALAYAN RURAL ACTION GROUP (CHIRAG)

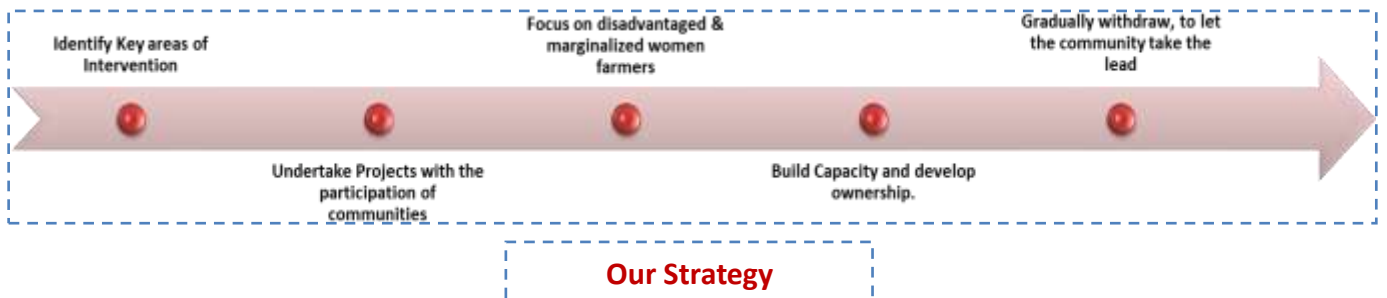


Motto:

“Go to the people,
Live among them,
Learn from them,
Love them,
Start with what they know,
Build on what they have,
But of the best leaders,
When their task is accomplished,
Their work is done,
The people all remark,
“We have done it ourselves’.
“Old Chinese poem

Mission:

“To improve the quality of life of rural people – especially the poor and the women – in the Central Himalaya. We attempt this through interventions in health, education, livelihood, and natural resource management; and by providing access to diversified livelihood options. We promote the sustainable ownership and management of common resources by the community”.



THE YEAR IN RETROSPECT:

In the last three and a half decades since its formation in 1986, CHIRAG has been committed to improve the quality of life of the rural people especially the poor and the women in the Himalayas. This is aligned to the sustainable development goals and national and international efforts for the Himalayan. The annual reporting year 2021-22 has been quite productive and CHIRAG was able to work rigorously in achieving its objectives and completing various activities in a timely manner.

A significant amount of time was spent in field activities post COVID 19 related lockdowns and restrictions. The timely reporting and execution of activities resulted in improved relationship with existing partners and donors. In health apart from providing preventive and curative services, new initiatives like 'Clinic on Wheels' with SBI Foundation was started. A fully equipped mobile medical van with a medical doctor along with lab testing and pharmacy caters for the health and medical requirements of the local communities at their doorsteps.

We continued our efforts to recharge and rejuvenate the Himalayan Springs. As the Himalayan Spring water continues to be the major or only source of water for the Himalayan population there is urgent need to retard or stop the rate of depletion of these *Himalayan springs*. Despite their significance, there was very little attention towards it, and majority of *springs* were drying. Through our efforts there is now increase in understanding on the significance of these Himalayan springs and efforts are being made to rejuvenate them. CHIRAG is now actively working in states of Uttarakhand, Himachal Pradesh and Meghalaya where its approach is being replicated in more than 6000 rural Himalayan villages and through its trainings in many more. We were able to increase water availability by 6,20,20,800 liters per annum through our spring recharge activities, whereas around 45,00,000 liters were captured through rain water harvesting structures aligning to National Water Mission, Ministry of Jal Shakti's "Catch the Rain" campaign. We were also able to set up solar lift systems for water distribution in remote villages which along with improving livelihood options has significantly reduced the drudgery of women and provided them with opportunity for better health and hygiene

Under the livelihood sector around 5000 farmers are now adopting advanced techniques and technology for cultivating millets and pulses. Villages have been encouraged to adopt appropriate livestock technologies to enhance their livelihoods and reduce drudgery particularly faced by hill's women. The women have been actively involved in forestry activities where more than 200,000 native species have been planted in various Van Panchayat areas in the last year. CHIRAG Education Program believes in providing experiential learning to its students and in order to ensure personal attention to all students, this was achieved by reducing the teacher to student ratio through our school policies and Balshishaks who took the learning from Chirag School and implemented it in the government schools. To continue our efforts to improve the quality of education the impact of the lockdown was reduced through facilitating teaching-learning during the last academic year. Where possible online classes were conducted, in others, cluster-based teaching learning and in-person teaching-learning was done. This has enabled girl students to continue and excel in their education and life.

The youth from institutes like IIM- Kashipur, Azim Premji University and SBI Youth for India under SBI Foundation, University of California has benefitted from the experience of CHIRAG and made significant contribution in knowledge transfer and bringing fresh perspective to promote innovation.

We positively look forward to the coming year to be able to replicate and multiply our efforts towards integrated rural development in the Himalayas in sustainable manner.

Badrish Singh Mehra (Ph.D)
Executive Director

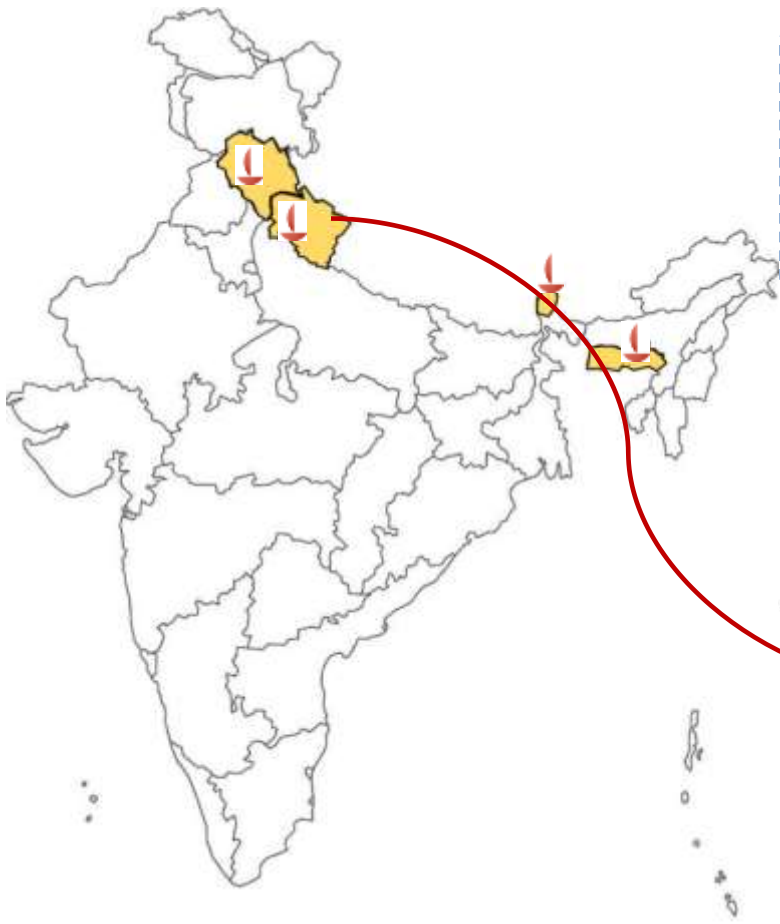
AREA OF OUR INTERVENTIONS

CHIRAG essentially works in categorically 4 sectors, viz. Natural Resource Management, Education, Livelihood and Healthcare. The organization firmly believes that these four sectors are fundamental pillars to sustainable development in the Himalayas.

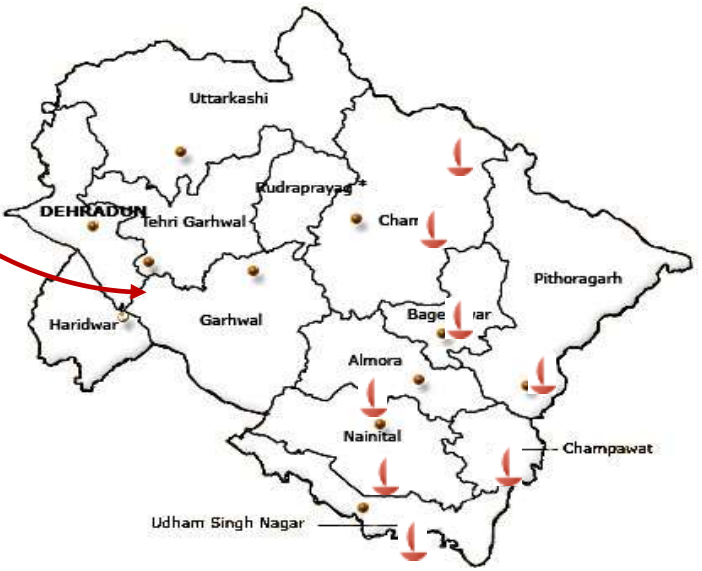


Committed to the SDGs, CHIRAG strongly advocates 15 of the 17 Sustainable Development Goals recognized by the UN in 2015 and works towards contribution to achieving these goals by 2030. The common point among all the areas of interventions designed by CHIRAG is the formulation of partnerships for a collective achievement of the envisioned goals. Therefore, outlining our motto, 'Communities' are essentially the core of our programs.

These community led institutions guarantee that the interventions go far beyond mere momentary solutions to long term-sustainable scales.



CHIRAG has had a direct presence in 4 Himalayan states of India, namely: Himachal Pradesh, Uttarakhand, Sikkim and Meghalaya. Besides, it has strengthened its hold in Uttarakhand through its presence in the district of Uttarakhand.



4 States

10 Districts

30 Blocks

490 Villages

35,000 Households

Over 1 lac. Population covered

NATURAL RESOURCE MANAGEMENT

CHIRAG has been working on issues of forest degradation and water and sanitation for the past three and a half decades. In 2006, it pioneered the participatory springshed management approach to recharge and rejuvenate the Himalayan springs. This was done in a focused way encompassing springshed, sociology-hydrology, geology and forestry of the Himalayan region. This approach tried to address the issue of reduced water availability and deterioration of water quality in the springs and strengthening local governance of water resources.

CHIRAG's key strategy in all its interventions is to involve the community right from the inception and seek active involvement from the planning phase to the project implementation phase and in post project maintenance phase. The focus is on involving the community and building capacities in basic geology, hydrology, forestry and water management. As women are the most important stakeholders, a conscious effort was made to form women-led water users groups locally called the 'Jal Upbhokta Samiti' and involve them in recharge activities and overall decision-making process.

Our work in Natural Resource Management (NRM) is divided into two categories –

- Spring Recharge Program
- Community Forestry and Fodder Program.

Spring Recharge Program

Communities in the Himalayan region are heavily dependent on natural springs for their water requirements especially drinking water. These natural springs are points of discharge of groundwater onto the surface of the earth. They are a product of rainwater that infiltrates the ground surface and moves following the underground geological structure. Since springs are dependent on rainfall, the change in rainfall pattern affects the springs. In addition, any structural change like building of roads and construction of houses affects the geological structure which in turn impacts the discharge in the springs. Several studies have shown that there is a gradual reduction in the discharge of some springs while some have completely dried up over the past 25-30 years which is a cause of serious concern.

Our work in water entail involving and working with the communities to rejuvenate the Himalayan springs through socio-hydro-geological approach. We aim to address the water availability and water quality in the springs.

Springs: A form of ground water typical to the 'Himalayan Topography', that forms when "Water table" reaches surface due to "Topographic Sway".



NAULA



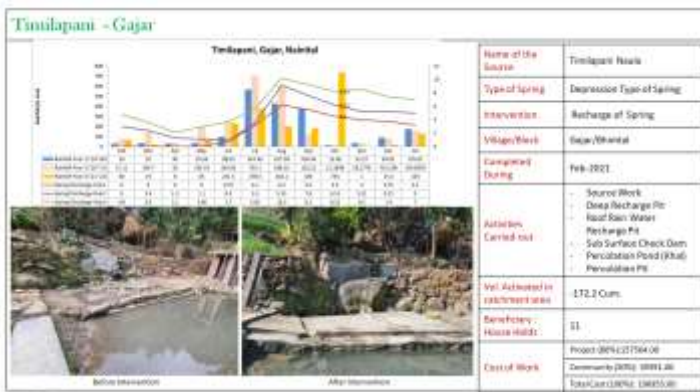
DHAARA

Springshed Development & Management:



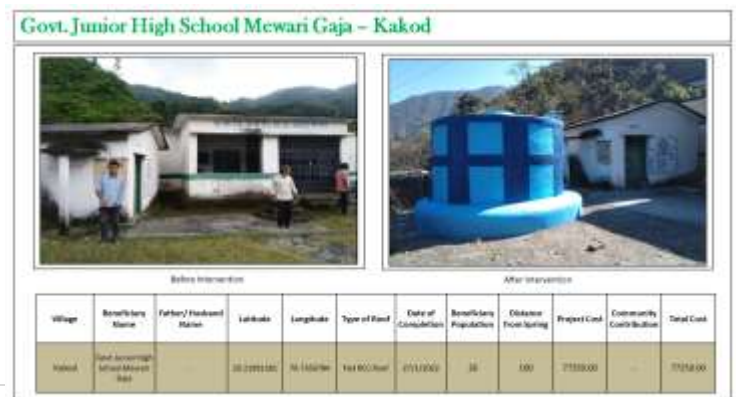
CHIRAG has been recognised by the National Institute for Transforming India, also called as NITI Aayog, and Ministry of Jal Shakti as the pioneers in Participatory Springshed Management for Himalayan spring rejuvenation in the country. CHIRAG has played an active role in the formation of the Springshed Management Consortium for the state influencing policy decisions of Uttarakhand and continues to work for the water security in the region.

Soil & water conservation activities



Roof Rain Water Harvesting Tanks

Additionally, we have been working towards solving the water accessibility issues with the households that are remotely located; far away from the springs by proving them rooftop Rainwater Harvesting tanks. The capacity of per tank is 10,000 liters. In year 2021-22 a total 150 Rain Water Harvesting Tanks have been constructed, in which 123 tanks constructed for the individual households and 27 tanks were build in Government Schools.









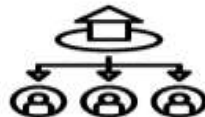


Solar water lifting systems:

To enhance water from the springs, complimented with a clean source of water distribution using 'Solar Power' to reduce the drudgery among the communities. CHIRAG has installed 3 solar lift water distribution schemes in Bhimtal Block of Nainital district. Through this schemes over 450 beneficiaries are directly benefited with these schemes.



Overall Spring impact data

 <p>118 Total Springs Recharged</p> <p>Discharge enhanced through Springs: 6,20,20,800 liters</p>	 <p>150 Total Roof Rain Water Harvesting Tanks Built</p> <p>45,00,000 liters Water harvested from Rainwater tanks Yearly</p>	<p>3 Solar lift schemes</p>  <p>450 Benefited beneficiaries</p>
 <p>118 Village Level Institutions, Communities came forward and formed</p>	<p>Community Contribution-</p>  <p>INR. 5,40,360 for O&M of Spring Recharge Activities</p>	<p>Employment Opportunities Generated-</p>  <p>worth INR. 10,50,200</p>
 <p>45,250 hours of Training & Development imparted to 1,500 personnel</p>	 <p>Liaised with 425 Govt. Officials at block level and Village Sarpanch project awareness</p>	 <p>50,200 Total Beneficiaries from all the interventions</p>

Community Forestry

Community forestry, fodder plantation on common land and efforts to recharge springs all require soil and water conservation efforts. At the outset, emphasis is laid on protection of the plots and on physical measures to conserve soil and water. Fodder, shrubs and grasses are planted along the contour trenches and terraces to assist in conservation. Protection also gives existing root-stock an opportunity to develop. In the subsequent year, following the enhancement of moisture in sites, saplings of broad-leaved species, particularly fodder varieties are planted. This process assists in the growth and increases the chances of success. This approach has also supported the natural regeneration of the native species.

2,34,500 saplings of indigenous species were planted in 460 hectares of land across 37 villages.

1,00,000 direct seed sowing were sown in 16 Van Panchyats

Strengthening Van Panchayat:
Mentored the members of Van Panchayat and farmers through various meetings



EDUCATION



CHIRAG's education program has been functional since early 1990. CHIRAG's model of para-teacher (Balshikshak) has been operational since 1992 and is one of the most successful programs for education in the state of Uttarakhand. CHIRAG has been successful in promoting holistic education and encouraging a fear free environment to its students where they can learn and grow at their own pace. Apart from providing quality academic instruction, the education approach also encourages students to develop an interest in arts and become sensitive to the environment. The students through this process not only do well academically but they are also confident individuals who participate in extra-curricular activities and ask meaningful questions in class. The student leadership has also been inculcated and they are doing well even after their school education.

Our key interventions in education are detailed below:

 <p>The Chirag School</p> <p>The Chirag School located in the picturesque Kumaon hills, was formally started in 2006. Our goal is to demonstrate that quality education for rural children can be provided at an affordable cost.</p>	 <p>Bal Shikshak</p> <p>Bal shikshak (auxiliary teacher) program was conceptualized in the belief that education is critical in bringing about social change. Bal shikshak program has come a good long way from appointing Para-teachers to ensure that the schools were at least opened regularly, all the way to ensuring a child-centric teaching-learning approach in these village schools through them.</p>	 <p>Digital Classroom</p> <p>The aim of these digital classes is to develop an interactive and creative learning method that focuses on conceptual understanding than rote memorization and to bridge the gap between the quality of education in government and private schools.</p>	 <p>Girls Scholarship</p> <p>The scholarship programme seeks to provide requisite academic and social support to academically able girls from Classes 9 and 12 from disadvantaged socio-economic backgrounds to complete their intermediate education.</p>
--	---	---	---

The Chirag School

The Chirag School believes in providing experiential learning to its students and in order to ensure personal attention to all students, the number of students per class is capped at a maximum of 18. In the year 2021-22, the school had 122 students from pre-school through class 5.

The impact of the lockdown was there in the year 2021-22. School used various strategies to continue children's learning during lockdown (From 1st April to 20th September). Ways to facilitate teaching-learning during the last academic year.

- Distribution of Booklet
- Online classes
- Cluster-based teaching learning
- In-person teaching-learning at School



Introduction of new methods to the existing curriculum: As an alternative school, we always strive for new ways to develop curiosity in children. This year we introduce the following dimension to our curriculum.

- Introduction of Project-based learning
- Integration of theater-based activities in teaching-learning
- Experimentation on simple science concepts.



Safety measures and infrastructure

- Upgraded our fire safety measures and obtain the fire clearance certificate
- Developed a few areas like a sandpit, staircase, and tree pavilion.

Upgradation of Teaching Learning Methods (TLM):

- Sports materials worth INR 40,000
- 500 science kits
- 100 books
- 160 books printed, developed by the Chirag School



Students' Academic achievement:

- 9 students got selected by Purukul School, Dehradun, for free quality education up to class 12th
- 2 students got selected by Navodaya Vidyalaya
- 100% of students connected with the teaching-learning process despite the lockdown.

Bal Shikshak/Para-Teacher Program:

Bal shikshak (auxiliary teacher) program was conceptualized in the belief that education is critical in bringing about social change; Bal shikshak program has come a good long way from appointing Para-teachers to ensure that the schools were at least opened regularly, all the way to ensuring a child-centric teaching-learning approach in these village schools through them.

- Implemented Bal Shikshak Program in 50 Government Primary Schools of Nainital & Bageshwar district of Uttarakhand.
- No. of students directly benefiting were 1628
- Community has contributed over 9 lack in 50 Government Primary Schools
- Libraries in 96 Government Schools were setup and continued to be monitored; distributed on an average of 700 book per school
- Conducted more than 50 training sessions and a constant dialog on subject knowledge and issues in pedagogy with auxiliary teachers
- Various meetings/workshops were organized with the S.M.Cs to remind them of their roles, responsibilities and power, and its relation to the development of the school
- Organized cross learning visits of committees to other schools that have better working S.M.Cs were also carried out.



Digital Classroom Program

The aim of these digital classes is to develop an interactive and creative learning method that focuses on conceptual understanding than rote memorization and to bridge the gap between the quality of education in government and private schools. The project covers 11 higher secondary and intermediate level schools in the Nainital and Udham Singh Nargar district of

Uttarakhand. These virtual classes were taken for three subjects Mathematics, Science and English for 6th and 8th grade.



- 6 higher secondary schools in the Ramgarh block of Nainital district
- 5 Intermediate level schools in the Rudrapur block of Udham Singh Nagar district
- The project has led to a dramatic increase in attendance in schools almost 90%
- A total of 2580 children's were directly benefited with this project. These virtual classes were taken for three subjects Mathematics, Science and English for 6th to 12th grade
- Around 80 volunteers from various states have teach students online
- A total of more than 6,500 sessions were conducted online in a year
- The students have become increasingly interested in their studies, completing their homework on time and asking questions related to topics covered in the next class. All this has contributed to a significant increase in the learning levels of students.

Impacts:

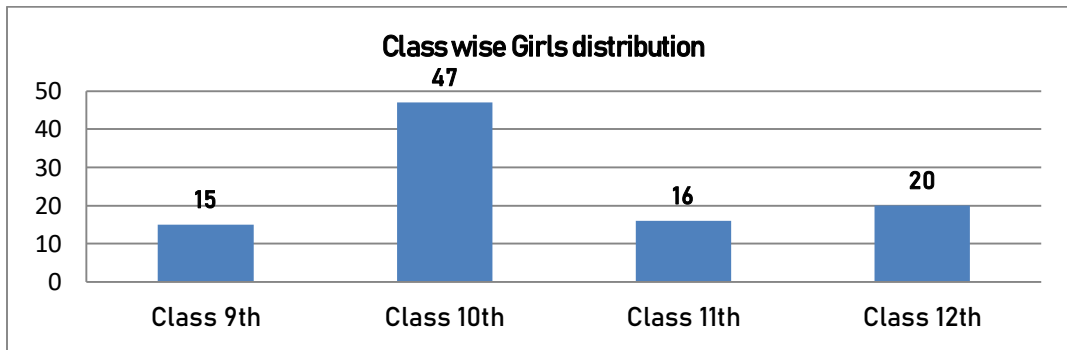
- Increased use of technology and innovative platforms in classrooms and among students
- Time management skill was improved among students and educators
- Increased peer learning
- Increased confidence and communication skills
- Learning level improved
- Star of the month initiative motivated students to perform better in the class
- Remedial classes helped students to be clear of basic concepts



- CHIRAG has set up 8 computer labs in Government Schools in Ramgargh Block of Nainital district.

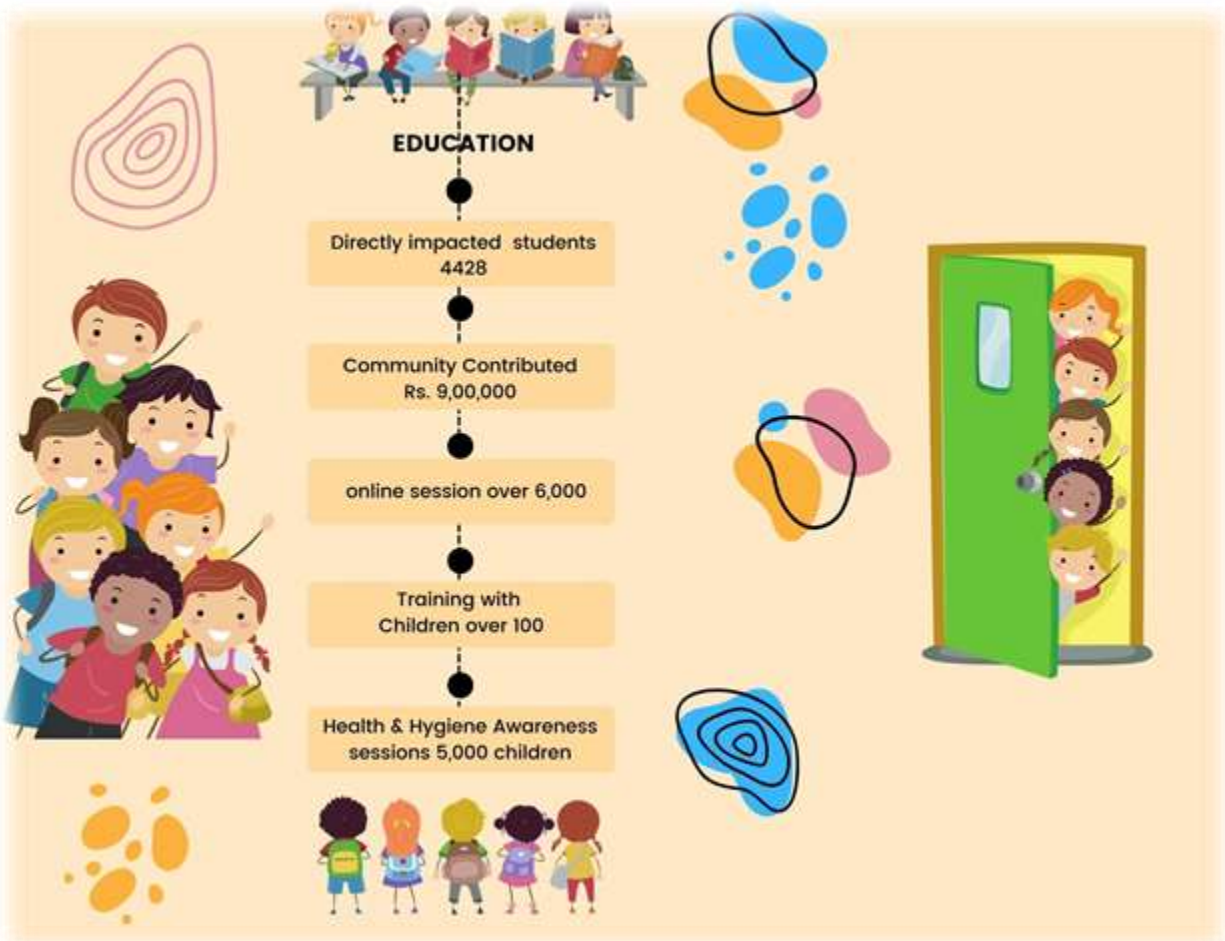
Girls Scholarship Programme

The scholarship programme seeks to provide requisite academic and social support to girls from Classes 9 and 12 from disadvantaged socio-economic backgrounds to complete their intermediate education. This programme covers the cost of their stationery, textbooks, uniforms, school fees and tuition support, and also monitors their health through biannual medical check-ups. The programme also aims to increase the confidence of the girl scholars by equipping them with necessary life skills. During the year 2021-22, 98 Girls have received Girls Scholarship.



Key highlights of the Girls Education Programme:

- Conducted residential tutorial support camp and vocational training at CHIRAG headquarters for one week.
- Organize regular health camps for the girl scholars. Provided tuitions to all girls at cluster level.
- Quarterly follow-up meetings were held by teachers with guardians and project coordinators on the progress of the scholars.
- 20 girl students appeared for the HSC examination (12th Grade). Among them, 17 passed with first division and 3 passed with second division.
- 47 girls appeared for SSC examination (10th Grade). Out of which, 29 passed with first division and 18 passed with second division.
- This year 62 girls have joined Himjyoti vocational courses viz. office management, fashion designing computer science and beauty & wellness.
- So far, 130 girls have joined Himjyoti Vocational Institute, Dehradun.



CASE STUDY



Miss. Bharti Uprati

Village Suyalbadi, Block Ramgarh,
District Nainital, Uttarakhand

Bharti Upreti was selected in the girl's scholarship program in class 9, she is studying in Government Inter College Dhokane. Her family's economic condition was bleak and her father was suffering from acute health issues. She has 2 younger brothers and sisters. Bharti used to be a very timid and introverted child. She would not express her feelings to anyone.

After her induction in the program, her family observed how she gradually started to open up and became a lot more expressive. She participated in all the meetings and enthusiastically attended the life skills training sessions. She attended her tuitions sincerely and with the support provided by CHIRAG and guidance of the tuition mentors, her interest in studies increased substantially.

Bharti started teaching her younger siblings at home and also the kids in her neighborhood. The program not only helped her better her grades, but also improve her personality. This holistic development gave her tremendous confidence and boosted her self esteem.

We are immensely proud to share, that Bharti secured a whopping 83% in her grade 10 examinations and is the school topper!

We wish her the very best for her bright and vibrant future!

RURAL LIVELIHOODS

CHIRAG continues to enable communities to strengthen and diversify livelihood options through agricultural marketing, finance for development and animal husbandry programs. CHIRAG has also initiated efforts at processing and packaging of agricultural and horticultural produce of the region that provides better returns to farmers. The integrated programme that the organization operates includes supports to farmers on:

- Sustainable agriculture and Non Pest Management (NPM)
- Promotion of community based animal husbandry
- Setting up cooperatives with poor women farmers
- Support to existing micro-enterprises
- Facilitation of value added research and development
- Setting up of a producer owned company.



Livelihood activities

Self Help Group

- Last year we worked with 200 **Self Help Groups (SHGs)** with a total membership of 1,910 and an average membership of 8-10 per group. The cumulative savings of these groups was Rs. 80.11 lacs and the total inter-loans availed during the year was Rs. 26.16 lacs.

Micro Federation

- **Set up livestock based micro federations:**
 - Cattle feed and poultry feed federation
 - Micro dairies fedearatoin set up at cluster level
 - A fedration working on Aurvedic Cattle Medicine unit

Community Facility Centers (CFCs)

- Community Facility Centers (CFCs) are formed to support the communities of rural hilly regions of Uttarakhand. CFCs provide services to the local consumers by supplying demand based products at its centers.
- Established 3 farm field school

Producer Company

- **Set up of Farmer Proudcer Organization (FPO)**
- Marketing of fresh fruits and vegetables, procurement and sale of pulses and spices and the provision of improved seeds.
- Around 5,000 farmers are directly associated with produce group and sale our agriculture and horticultre produce through this FPOs

To enhance the income of the rural farmers from the Ramgarh block of Nainital district, CHIRAG is promoting to grow pulses and legume in farmer's field. The selected crops in the cluster are Rajma (kidney bean), Tur, Gahat, millets and vegetable. During the year, a total of 1,500 small marginilzed farmers from 40 villages in 76 hectares of farm land. Through this project, farmers are getting health seeds, through various field based trainings improved the productivity of crops, and helped farmers sell produce at their doorstep to eases the burden of transport to mandi/market.



HEALTH

Our efforts with regard to community health include an emphasis on both curative health and preventive and promotive health.

Chirag Rural Health Center

The CHIRAG Rural Health Center aims to provide the community access to quality healthcare. The health center caters to the dental, ante-natal, occupational therapy, and emergency needs of the community.

Following health services are available:

- General OPD
- Ayurvedic treatment
- Dental treatment
- Special OPD on Gynecology and Antenatal care
- Joint health camps with other institutions



Break-up of different services provided by Chirag Rural Health Center during 2021-22:

Name of Cases	Total
Out patients	5206
Patient under observation	68
Lab Test	2341
X-Ray/ECG	946
No. of Rural health camps	04
No. of patient treated in camps	163
Antenatal checkup (Camps)	94
Ultrasound checkup (Camps)	118



Mobile Medical Van –Clinic on Wheels

In the year 2021-22, with the support of State Bank of India Foundation, CHIRAG has started to run Mobile Medical Van for the rural communities of Bhimtal Block of Nainital district. This mobile medical Van has been managed by a medical doctor, a pharmacist, a lab technician and a driver. The mobile medical van is equipped with equipment for carry out pathological test, doctor consultation, providing medicines, awareness generation.

The Clinic on Wheels is providing mobile OPDs, specialized health camps, awareness on vaccination and prevention of Covid-19, water and sanitation and personal health and hygiene etc.



GOVERNANCE AND MANAGEMENT

The Governing Board of CHIRAG consists of 4 members which are elected by the 25 members of the General Body.



Mr. Radesh Lall
Chairperson
Engineer and Entrepreneur



Prof. Malavika Karlekar
Vice Chairperson
Author and Editor, Centre for Women's Development Studies



Prof. Brij Mohan Tankha
Member
Retired Professor, University of Delhi



Ms. Kamani Prakesh
Member
Consultant -Social Development

THE TEAM

In March 2022, there were 95 employees in CHIRAG. Out of them, 84 work in different programs, 4 are support staff and 7 work in administration and finance. A large proportion of these development professionals have been with CHIRAG for over a decade and have made invaluable contributions in achieving the organization's goals, making a difference in the lives of thousands of families.

The teams work in coordination for development and implementation of the projects under various programs of the organization to meet its goal and mission.

Registration Details

- The Central Himalayan Rural Action Group (CHIRAG) is a Society registered under the Indian Societies Registration Act of 1860. Registration No. 16928, dated 29th July 1986.
- The Central Himalayan Himalayan Rural Action Group (CHIRAG) is authorized to receive foreign contributions as per the Foreign Contribution Regulation Act 1976. Registration No. 231650446, dated 5th July 1987.
- CHIRAG is registered under Sections 12A and 80G of the Income Tax Act, 1961.
- Section 12A – No. CIT-VI/TE (276)/86/1292 dated 9/1/1987
- Section 80G-No. DIT (E) 2007-2008/C245/1918 dated 21/09/2007

OUR PARTNERS

CHIRAG remains indebted to the following organizations with whom we have been working over a number of years.



ACKNOWLEDGEMENT

The results that we have achieved would not have been possible neither would our lives be the same without the contribution and support of these remarkable institutions and individuals who continue to inspire and enlighten us

Our heartfelt thanks to Dr. Ruma Mukherjee for her continued support to the Chirag Rural Health Center.

We would like to thank Mr. Tautik Das, Mr. Chetan Mahajan, Ms. Soniya Philip, Nikhelesh Senapati, Vinod Kumar, Parinaya Pandey and Pavibai Moti Ram Shahani Trust, Dr. R.K. Thakral, Arbindo Ashram for providing valuable support to raise funds to the CHIRAG School.

We would like to acknowledge the support of the local community of the area where we work who have actively participate in the field activities and made significant contributions in making things happen on the ground.

We specially acknowledge the support of all our donors who have made it possible for us to realize our vision and mission and reach out to the disadvantaged and the marginalized sections of the society. Our sincere thanks to all those individuals and institutions that have collaborated with us and replicated the field activities for scaling up our efforts.

Finally, we thank our Governing Board and General Body for their vision, guidance and direction.

ANNEXURE – 1 : ACCOUNTS

Central Himalayan Rural Action Group Balance Sheet as on 31st March 2022

	Current Year (Rs)	Previous Year (Rs)
Liabilities		
Corpus Fund	4,43,27,294	4,33,27,294
Reserve Fund	1,26,44,196	1,15,57,131
Fixed Assets Utilisation Fund	1,53,35,622	1,40,16,711
Reafforestation Fund	6,44,512	6,44,512
Current Liabilities	1,24,74,139	2,68,85,728
	8,54,25,763	9,64,31,376
Assets		
Fixed Assets	1,53,35,622	1,40,16,711
Investments	4,45,67,309	4,33,67,208
<u>Current Assets, Loans and Advances</u>		
Closing Stock of Medicines and Consumable		
Cash, Bank Balance and Term Deposit	2,51,19,518	3,86,40,974
Loans and Advances	3,99,314	4,02,4483
Security Deposit (endorsed in favour of Government Authorities)	4,000	4,000
	8,54,25,763	9,64,31,376

Signed on behalf of Chirag

Chairperson: RadheshLall

Member: Malvika Karlekar

Executive Director: Badrish Singh Mehra

General Manager Finance and Accounts: B K Kabdwal

In terms of our report of even date annexed

For S Ramanand Aiyar and Co.

Chartered Accountant

Registration No. 000990N

R Balasubramanian

Partner

New Delhi

M No. 080432

Central Himalayan Rural Action Group (CHIRAG)
Receipts and Payments Accounts for the year ended as on 31st March 2022

Receipts	Current Year (Rs)	Previous Year (Rs)
Balance as on 1st April 2021	5,40,37,369	3,91,71,336
Project Funding		
Foreign Contribution	5,05,500	31,82,472
Other Receipts	17,05,742	10,38,185
Local Contribution	5,40,36,405	5,67,64,772
Rural Health Services	2,4,17,988	32,58,332
Donations	18,66,493	19,21,280
Interest	14,24,748	15,69,540
Others	40,53,849	35,67,551
	12,00,48,084	11,04,73,468
Payments		
Berkeley Reafforestation Trust	5,05,500	4,74,798
For- Education Programme	-	44,63,376
For Maximizing Mountation Programme (MMAp)	-	1,11,316
Other Payments (FCRA)	34,16,142	25,19,469
For- Central Himalayan Livestock Initiative (CHLI)	5,21,858	7,02,725
For Mission Pulses	18,99,619	15,76,431
Integration of Microfinance (IMF)	3,46,203	6,51,696
For Education and Sports Initiatives (ESI)	13,10,581	13,62,347
Rajeshwar & Susheela Dayal Charitable Trust		
For Improving the quality of Education in Primary School	12,82,614	11,58,411
For Girls Education Scholarship	10,04,491	9,75,320
Ernst And Young Founaction (E&Y) for Afforestation Project	-	10,10,986
PENGEA- Econet Assests Pvt. Ltd	25,55,727	8,12,306
Grow Tree Ecosystem Foundation For- Khal Prepatation	1,65,000	-
Ashok Leyland Ltd. For Spring Recharge Programme	1,87,72,513	1,14,20,472
Azim Premji Philanthropic Initiatives	1,60,61,777	1,70,64,780
CEDAR- For Spring Recharge Programme	8,28,448	1,54,546
Mahindra & Mahendra Limited	88,11,934	13,64,148
Dharampal Satyapal Charitable Trust (Himanchal Pradesh)	18,76,160	8,29,252
Dharampal Satyapal PVt. Ltd. (Uttarakhand)	63,67,586	7,62,427
S.B.I. Foundation	15,29,724	4,40,343
For: SBI Sanjeevani-Clinic on Wheels Support for Providing Primary Health Care Services in Nainital Uttarakhand	29,73,921	-
Meghalaya Basin Management Agency (M.B.M.A.)	2,28,800	10,56,160
Rural Health Services	30,73,733	37,86,054
CHIRAG School	1,70,591	-
Other Payments	41,94,586	37,38,736
Balance on 31st March 2022	4,21,50,586	5,40,37,369
	12,00,48,094	11,04,73,468
Term Deposits under the head "Cash and Bank Balance	80,11,203	57,52,694
Term Deposits under the "Investments"	1,73,92,057	1,57,65,337
	2,54,03,260	2,15,18,031

Central Himalayan Rural Action Group
Income and Expenditure Account for the year ended as on 31st March 2022

Income	Current Year (Rs.)	Previous Year (Rs.)
Project Funding		
Foreign Contribution	5,05,500	31,82,472
Other Foreign Contribution	7,05,742	10,38,185
Local Contribution	5,40,36,405	5,67,64,772
Donations	18,66,493	16,21,280
Rural Health Services	24,17,988	32,58,332
Interest	14,24,748	15,69,540
Others	31,21,304	26,83,695
Projects in Progress	2,66,82,871	1,26,91,602
	9,07,61,051	8,28,09,878
Berkeley Reafforestation Trust	5,05,500	4,74,798
The Hans Foundation For- Education Programme	-	44,63,376
Himmothan Society		
For Maximizing Mountation Programme (MMAP)	-	1,11,316
Other Payments (FCRA)	34,16,142	24,58,439
For- Central Himalayan Livestock Initiative (CHLI)	5,21,858	7,02,725
For Mission Pulses	18,99,619	15,76,431
For-Integration of Microfinance (IMF)	3,46,203	6,51,696
For Education and Sports Initiatives (ESI)	13,10,581	13,62,347
Rajeshwar & Susheela Dayal Charitable Trust		
For Improving the quality of Education in Primary School	12,82,614	11,58,411
For Girls Education Scholarship	10,04,491	9,75,320
Ernst And Young Foundation (E&Y) for Afforestation Project	-	10,10,986
PENGEA- Econet Assets Pvt. Ltd For tree Plant	25,55,727	8,12,306
Grow Tree Ecosystem, Foundation for Khal Preparation	165,000	-
Ashok Leyland Ltd. For Spring Recharge Programme	1,87,72,513	1,14,20,472
Azim Premji Philanthropic Initiatives	1,60,61,777	1,70,64,780
CEDAR- For Spring Recharge Programme	8,28,448	1,54,546
Mahindra & Mahindra Limited	88,11,934	12,05,297
Dharampal Satyapal Charitable Trust (Himanchal Pradesh)		
For- Recharge Programme for Water Security	18,76,160	7,55,318
Dharampal Satyapal Pvt. Ltd. (Uttarakhand)	63,67,586	6,80,495
S.B.I. Foundation	15,29,724	4,40,343
SBI Sanjeevani- Clinic on Wheels Support for Programme		
Implementation	84,650	-
Meghalaya Basin Management Agency (M.B.M.A.)	2,28,800	10,56,160
Rural Health Services	30,81,686	36,39,625
CHIRAG School	1,70,591	-
Other Payments	52,55,627	49,41,666
Total Expenditure	7,60,77,231	5,71,16,851
Available Funds	1,46,83,820	2,56,93,027
Appropriations		
Transferred to project in progress	1,22,77,844	2,66,82,871
Surplus for the year transferred to Reserve Fund	24,05,976	(9,89,844)
	1,46,83,820	2,56,93,027

CHIRAG TEAM 2021-2022

Aditya Singh Kutiyal	Harish Chandra Palania	Prema Tiwari
Amba Dutt Bhatt	Harish Ram	Pritam Singh Rautela
Amit Singh Bisht	Harish Singh Bisht	Pushkar Singh Khati
Anand Singh	Hema	Pushpa Devi
Anand Singh Bisht	Hema Bisht	Pushpa Negi
Anil Chandra Binwal	Jaswant Singh Bisht	Radhakant Mehar
Anil Kumar Keshari	Jitendra Singh Bisht	Raghvendra Singh Bisht
Asha Sah	Kailash Chandra Joshi	Rajani Bisht
Ashwani Rayala	Keshav Dutt Joshi	Rajendra Singh Bargali
Balwant Singh Sammal	Khimanand Joshi	Rajendra Singh Bisht
Basanti Bisht	Khushal Singh Bisht	Rakesh Tamta
Bhaskaranand Joshi	Kiran Bisht Devi	Ram Singh Bisht
Bhim Singh Negi	Krishana Chandra Bhandari	Ranjeet Kumar Sahani
Bhupal Singh Bisht	Krishana Kumar Nayal	Ranjeet Verma
Bhupal Singh Jeena	Kurtti Bisht	Ridhi
Bipin Kumar Kaddwal	Kusum Tiwari	Ritika
Champa Pandey	Lakshmi Biroria	Rohini Datta
Chandan Singh Bisht	Lalita Devi	Sachin Kumar Chaudhary
Chandan Singh Chamiyal	Lata Harbola	Sandeep Dutt Bhatt
Chandra Bhakuni	Likam Abhishek	Sanjay Joshi
Deep Chandra Kandpal	Mahendra Singh Bisht	Sarita Jeena
Deepa	Mahendra Singh Raikwal	Suman Das
Deepak Singh Nagarkoti	Mohan Singh Bisht JE	Sunder Lal
Devendra Singh Bisht	Mukesh Singh Sammal	Sunder Singh Nayal
Devendra Singh Mehta	Nandan Singh Bisht	Sunita
Devendra Singh Nayal	Narendra Singh Parihar	Surendra Singh Negi
Diwan Ram	Naveen Chandra	Suresh Kumar
Diwan Singh Mehta	Naveen Chandra Bhatt	Tara Singh Bisht
Dr. Badrish Singh Mehra	Naveen Singh	Tej Singh Chikwal
Dr. Mahendra Singh Bisht	Nishant Singh Negi	Thakur Singh
Ganesh Singh	Pankaj Kumar Negi	Tulsi Negi
Ganga Joshi	Pankaj Singh Negi	Umesh Singh Mehta
Gautam	Payal Shah	Vikas Rawat
Geeta Arya	Pooja Rathii	Vikas Singh Rawat
Geeta Bora	Pooja Shukla	Vikram Singh Raikwal
Girish Chandra Budhani	Pooran Singh Raikwal	Vinod Kumar
Govind Singh Bisht	Pradeep Kumar	
Harendra Singh Nayal	Prayag Dutt Bhatt	